

**AREA DEMOGRAPHICS:**

|                    | 1 mile   | 3 mile   | 5 mile   |
|--------------------|----------|----------|----------|
| Population         | 33,252   | 225,750  | 600,386  |
| Average HH Income  | \$72,228 | \$76,222 | \$79,558 |
| Daytime Population | 27,891   | 75,269   | 298,907  |
| Households         | 17,718   | 89,654   | 245,272  |

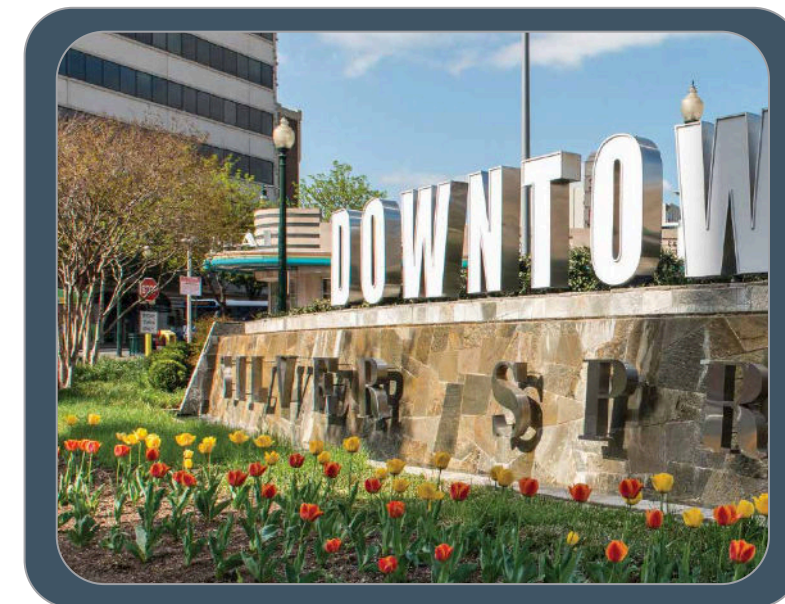
US CENSUS BUREAU, CENSUS 2010 SUMMARY FILE 1. ESRI FORECASTS FOR 2016 AND 2021 PROJECTIONS. ACTUAL DEMOGRAPHICS BASED ON 2016 FORECAST.

The information contained herein was furnished to us by sources we deem to be reliable, but no warranty or representation is made to the accuracy thereof. This offering is subject to correction or errors and omissions, change of price, prior to sale/lease or withdrawal from the market, without notice.

**FOR MORE INFORMATION:**

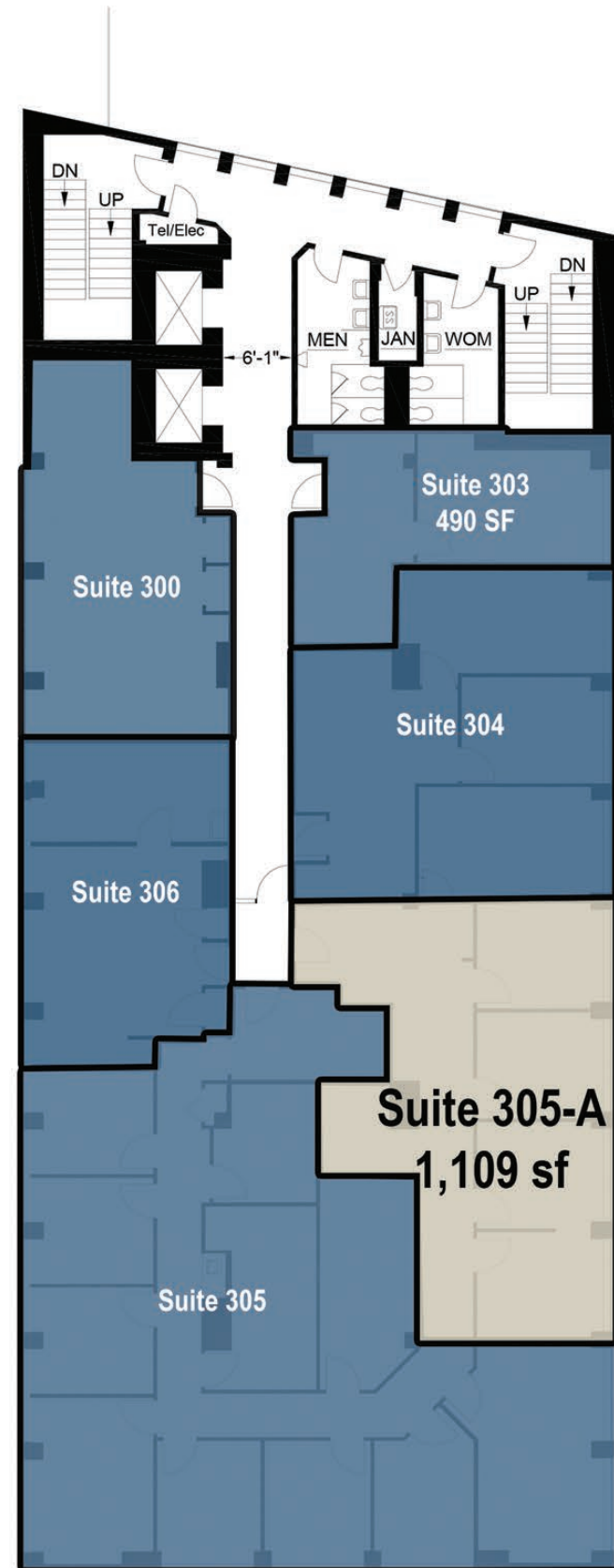
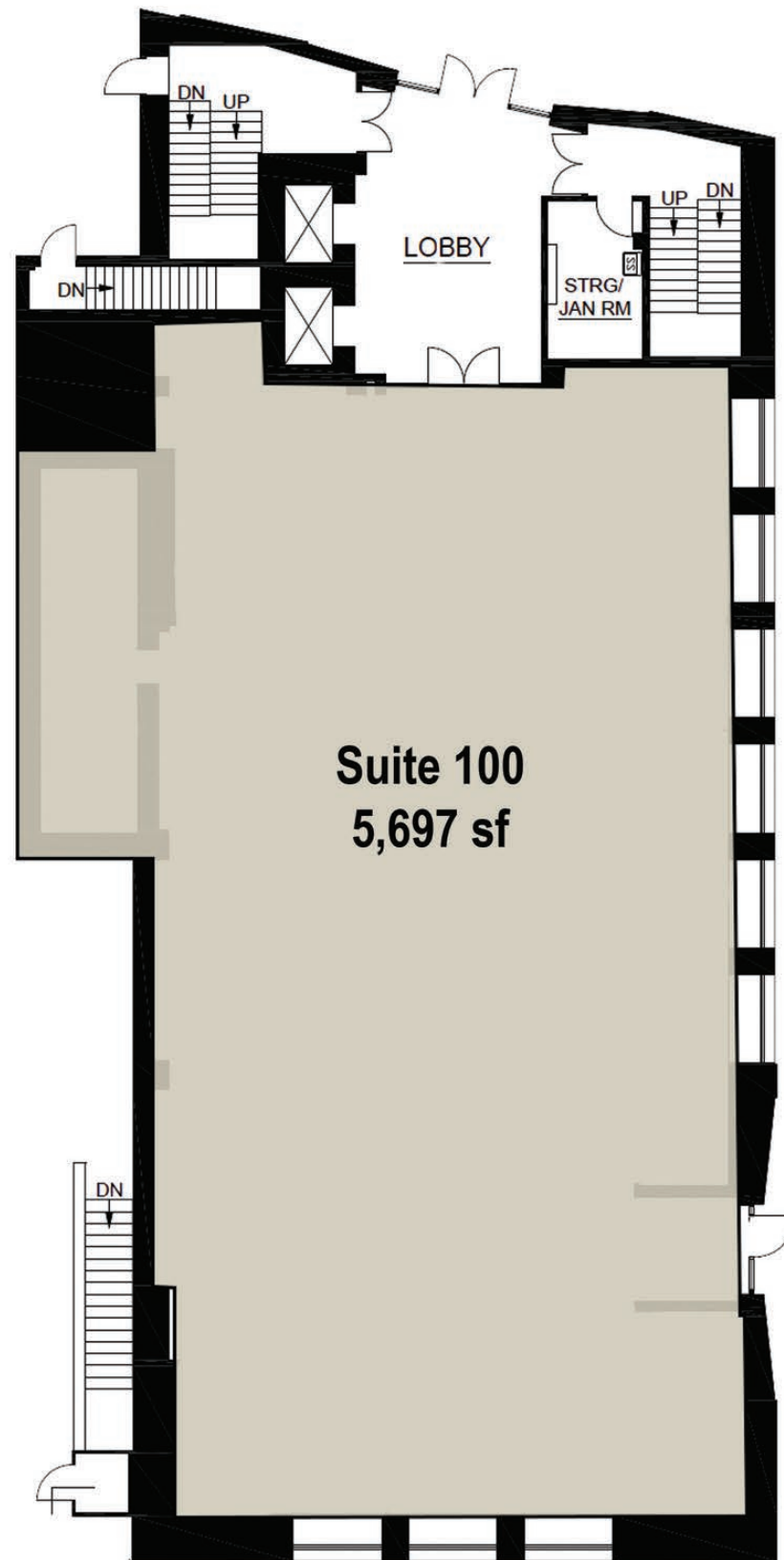
**Jeff Edelstein**  
 202.375.7946  
[jeff@roadsidellc.com](mailto:jeff@roadsidellc.com)

**Roadside Development LLC**  
 3939 Wisconsin Avenue, NW  
 Suite 100  
 Washington, DC 20016  
[www.roadsidedevelopment.com](http://www.roadsidedevelopment.com)



**SILVER SPRING**

8700 Georgia Avenue has all the amenities the city offers in downtown Silver Spring. Located only two blocks from Route 29 and .03 miles from Metro's redline & MARC commuter rail, this location is convenient to everything!



LEASED

AVAILABLE

