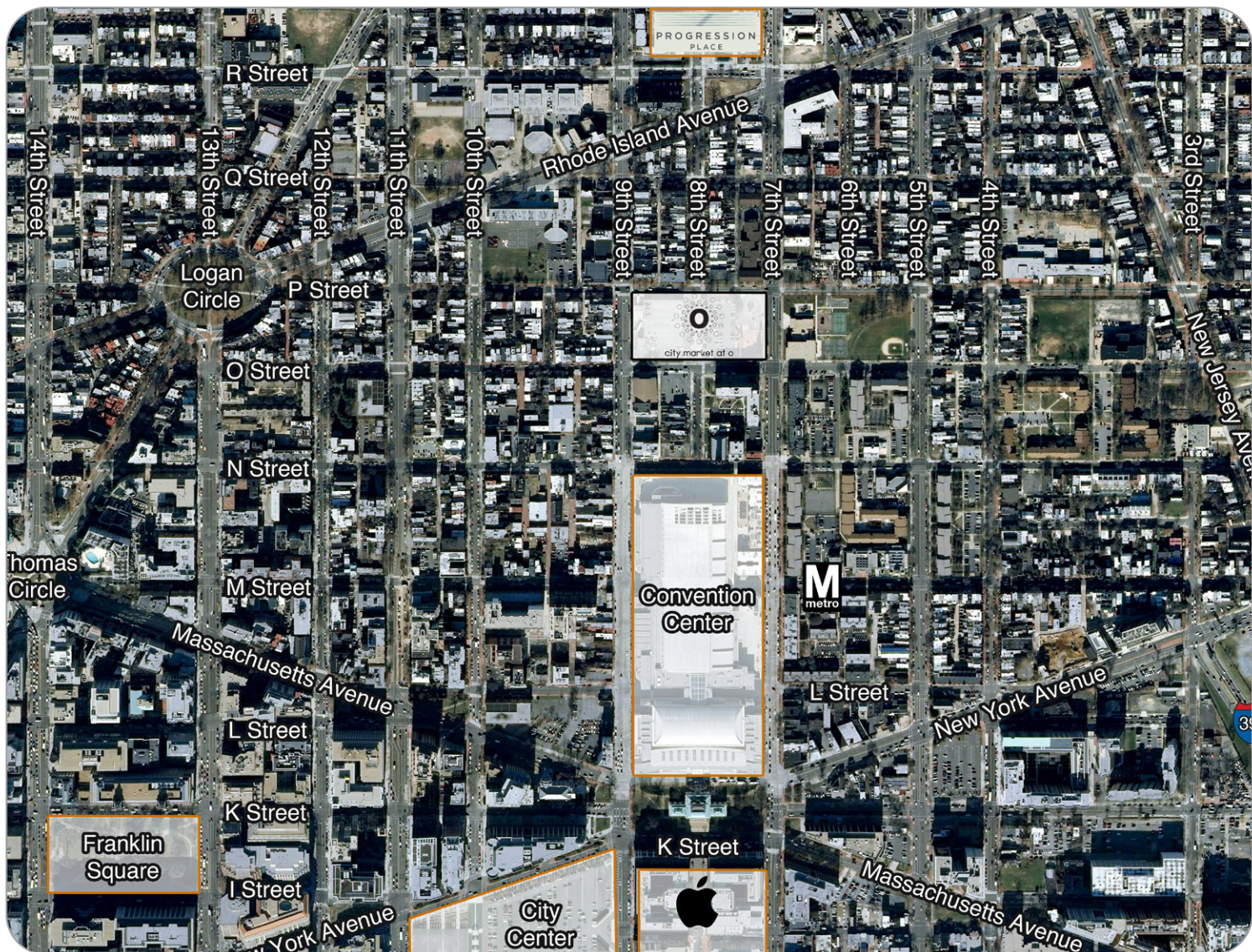


CITY MARKET AT O

7th & O Streets, NW | Washington, DC



AREA DEMOGRAPHICS:

| | .5 mile | 1 mile | 1.5 mile |
|--------------------|-----------|-----------|-----------|
| Population | 27,966 | 89,973 | 158,805 |
| Average HH Income | \$101,483 | \$106,404 | \$103,733 |
| Daytime Population | 12,171 | 178,732 | 365,501 |
| Households | 14,613 | 46,856 | 79,543 |

US CENSUS BUREAU, CENSUS 2010 SUMMARY FILE 1, ESRI FORECASTS FOR 2019 AND 2024 PROJECTIONS. ACTUAL DEMOGRAPHICS BASED ON 2019 FORECAST.

The information contained herein was furnished to us by sources we deem to be reliable, but no warranty or representation is made to the accuracy thereof. This offering is subject to correction or errors and omissions, change of price, prior to sale/lease or withdrawal from the market, without notice.

FOR MORE INFORMATION:

Jeff Edelstein
202.375.7946
jeff@roadsidellc.com

Roadside Development LLC
3939 Wisconsin Avenue, NW
Suite 100
Washington, DC 20016
www.roadsidedevelopment.com

CITY MARKET AT O

7th & O Streets, NW | Washington, DC



the new element of style.

Modern in every respect, City Market at O is located in the heart of Shaw, one of DC's oldest and culturally rich neighborhoods. Located between O and P Streets, NW and 7th and 9th Streets, NW, the project links Downtown and the Convention Center with Howard University and the U Street Corridor.

City Market is a one million square foot, urban infill project that includes over 87,000 square feet of retail, 650 multi-family units, a 182-room Cambria Suites Hotel, and a 500-car parking garage. This historic O Street Market at 7th and O has been restored and incorporated into a state-of-the-art 78,000 square foot Giant Food Store. The remainder of the retail space includes award winning restaurant Convivial, Dolci Gelati, Gloss Bar, Oyster Oyster and McWilliams Ballard.

The 549 units of market rate rentals at City Market at O, which include the 142 new residential units at 880 P and the 90 units of active senior living at The Hodge are uniquely designed to enhance the urban lifestyle.

