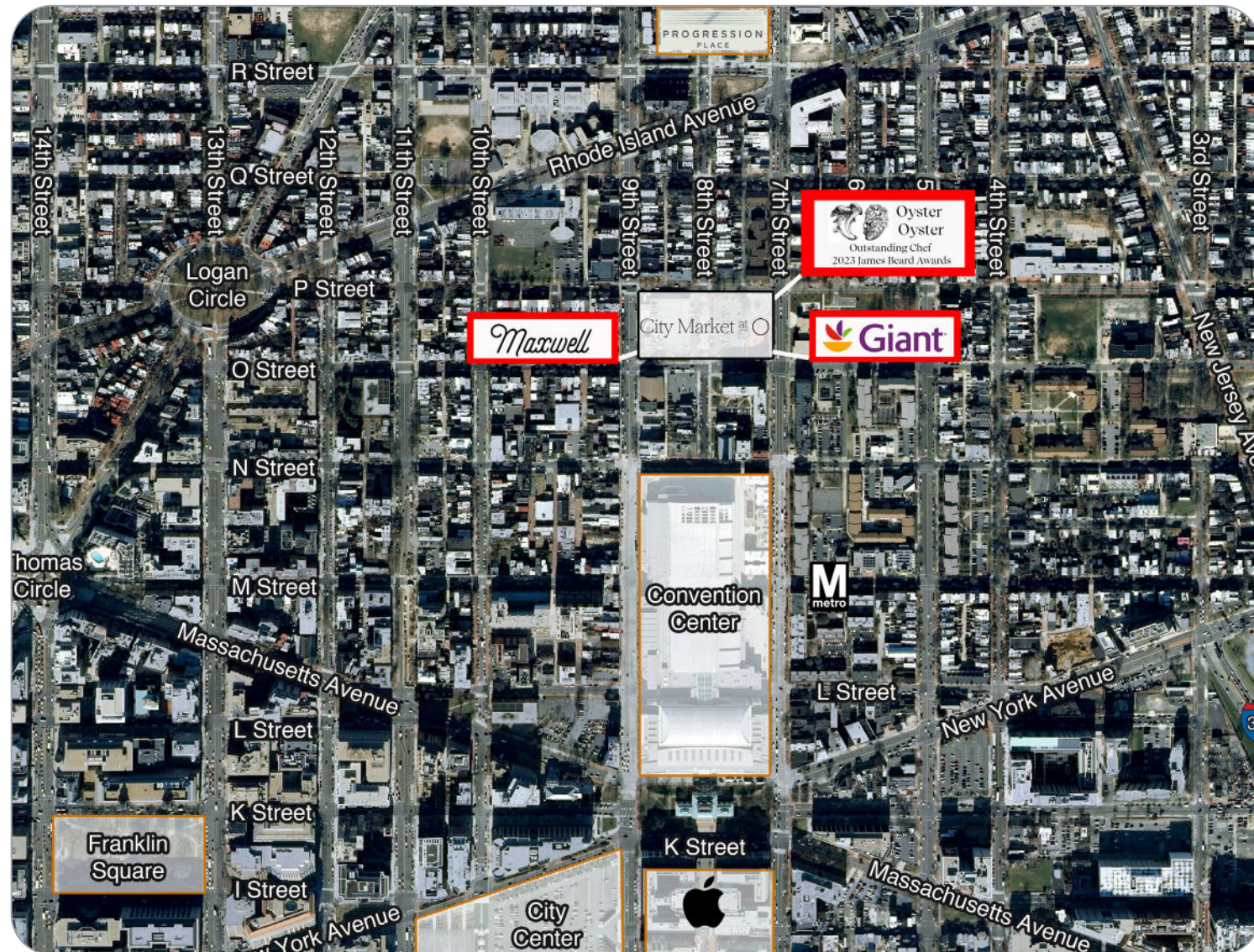
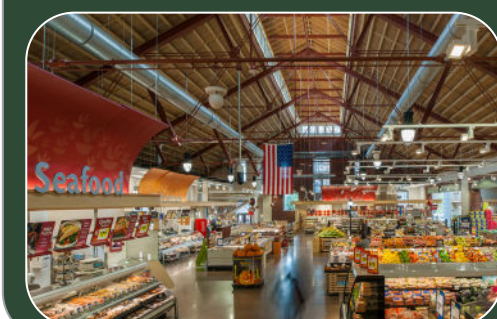
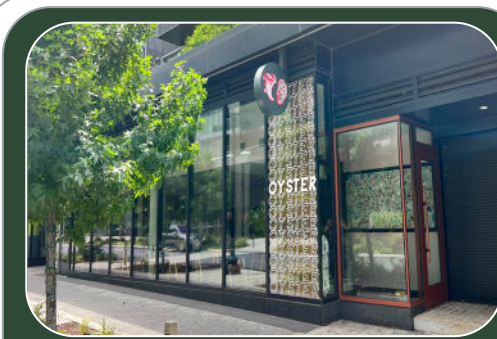


City Market at O



City Market at O



the new element of style.

Modern in every respect, City Market at O is located in the heart of Shaw, one of DC's oldest and culturally rich neighborhoods. Located between O and P Streets, NW and 7th and 9th Streets, NW, the project links Downtown and the Convention Center with Howard University and the U Street Corridor.

City Market at O is made up of 880 P, Intersect, The Medley and The Hodge, a one million square foot, urban infill project that includes over 87,000 square feet of retail, 623 multi-family units, a 182-room Hyatt Hotel, and a 500-car parking garage. This historic O Street Market at 7th and O has been restored and incorporated into a state-of-the-art 78,000 square foot Giant Food Store. The remainder of the retail space includes Dolci Gelati, Gloss Bar, Oyster Oyster and McWilliams Ballard.

AREA DEMOGRAPHICS:

	.5 mile	1 mile	1.5 mile
Population	27,966	89,973	158,805
Average HH Income	\$101,483	\$106,404	\$103,733
Daytime Population	12,171	178,732	365,501
Households	14,613	46,856	79,543

US CENSUS BUREAU, CENSUS 2010 SUMMARY FILE 1, ESRI FORECASTS FOR 2019 AND 2024 PROJECTIONS. ACTUAL DEMOGRAPHICS BASED ON 2019 FORECAST.

The information contained herein was furnished to us by sources we deem to be reliable, but no warranty or representation is made to the accuracy thereof. This offering is subject to correction or errors and omissions, change of price, prior to sale/lease or withdrawal from the market, without notice.

FOR MORE INFORMATION:

Jeff Edelstein
202.375.7946
jeff@roadsidellc.com

Roadside Development LLC
3939 Wisconsin Avenue, NW
Suite 100
Washington, DC 20016
www.roadsidedevelopment.com

